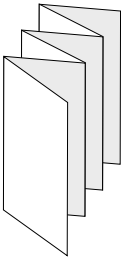


Geomate.jr Quick Start Guide

On a legal size sheet (14" X 8.5")
Print page 1 out then turn over the sheet to print out the back page.
Cut along the fold lines and fold like folding diagram!



Folding diagram

cover side

Copyright © 2009 Apisphere, Inc. All rights reserved.
Apsphere and geomate jr are trademarks of Apisphere, Inc. Other trademarks
are the property of their respective companies and are used with permission.

STEP 1:
Go outside

STEP 2:
Switch it on

STEP 3:
Follow the arrow
& distance to your
closest geocache!

Scrolling through pages

Press to see
other 'PAGES'

Geocaching

Geocache code

Compass & position

List of found
geocaches

Page functions

Press for
action on each 'PAGE'

Go to next closest
geocache

Go to next closest
geocache code

View heading, latitude,
longitude, & satellites

Scroll through the found
cache list

- Hunting Geocaches -

A geocache is a container
that holds a log book &
sometimes small trinkets.

Geocaches come in all
different sizes, shapes & styles.
They can even be disguised!

They are hidden almost
anywhere; under benches, inside
logs, on street signs! But they are
never ever buried.

Do sign the log book. If you
take something, leave something.
Do respect your environment
and replace the geocache
exactly where you found it!

For a full user guide,
geocaching info,
& to signup:
www.mygeomate.com

Geocache with friends

This product is not intended as a primary navigation
device. The user assumes all responsibility
associated with the use of this product.
Do not use while driving. In no event
shall Apisphere, Inc. be liable for any damages
resulting from use or from defects in the product.

This device complies with Part 15 of the FCC Rules.
Operation is subject to the following two conditions:
(1) this device may not cause harmful interference,
and (2) this device must accept any interference
received, including interference that may cause
undesired operation.

FC

PN: 04-0002-01

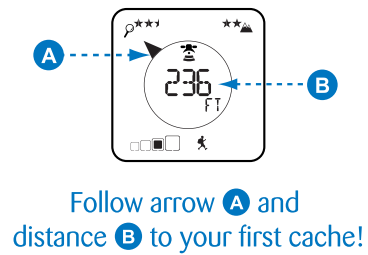
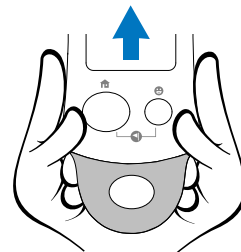
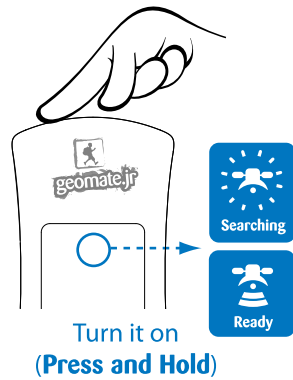
get out there!

Quick Start
Guide

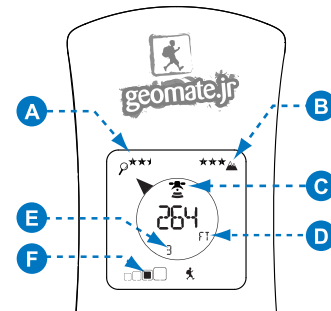
Getting Started




inside



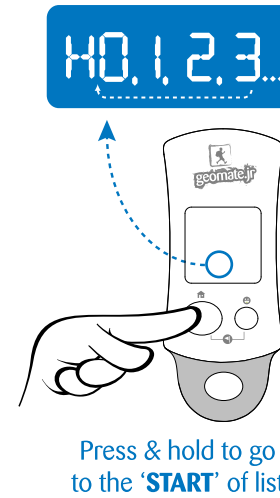
Other display items



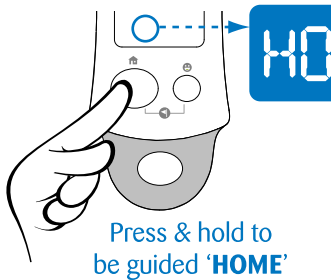
- A** Find difficulty (1 - 5)
- B** Terrain difficulty (1 - 5)
- C** GPS status 
- D** Distance units
- E** Closeness order (1, 2, 3...)
- F** Size of geocache (1 - 4)

Selecting a different geocache

Press to go to **'NEXT'**
closest geocache in list



Setting & navigating home



Marking a geocache as found

